

## Electronics & Components for Wellness


Main catalogue

by



VALANTIS

SWISS  MADE

Inno  ation for your wellness

# Company

VALANTIS offers a wide range of electronic components and value-added solutions for the whirlpool and SPA market.

Established in Switzerland since 2004, the company combines leading edge technology and design with the objective of intelligent and ergonomic management of your special areas of relaxation.

The products are fully developed “in house” and produced in Europe by specialized well established contract manufacturers, whose disposed of certified ISO9001 quality management systems.

In addition to the products listed in this catalogue, we offer to realize customer specific solutions.


Our motto -  
**quality, punctuality and innovation...**  
for your satisfaction!

IDEAS

DESIGN

QUALITY

TECHNOLOGY

Inno  ation for your wellness

VALANTIS SARL  
Les Savagnières dessous 50  
CH - 2610 Les Pontins  
Switzerland

Tel +41 78 646 01 77  
Fax + 41 32 941 45 68  
Email : [info@valantis.ch](mailto:info@valantis.ch)  
Web : [www.valantis.ch](http://www.valantis.ch)

2019  
2020

e  
d  
i  
t  
i  
o  
n

[PROFIMAX whirlpool concept / page 4 - 5](#)

[Whirlpool systems FIRST / page 6 - 11](#)

[Whirlpool systems CONQUEST / page 12 - 20](#)

[Whirlpool systems PB / page 22 - 24](#)

[Whirlpool systems TACTILIS / page 26 - 30](#)

[Whirlpool controllers / page 32 - 34](#)

[Accessories for whirlpool / page 35](#)

[PROFIMINI whirlpool concept / page 36 - 37](#)

[PROFILED lighting concept / page 38 - 39](#)

[Lighting systems / page 40 - 44](#)

[Components for lights / page 45](#)

[Bluetooth sound system / page 46](#)

# PROFIMAX whirlpool concept

PROFIMAX ...

**... the high end electronic solution in the market !**

VALANTIS introduced in 2015 the electronic concept **PROFIMAX** for the control of hydromassage whirlpools.


This solution is based on a compact electronic controller where any VALANTIS panels as well as a wide range of peripherals from the market can be connected.

The concept offers also a total hardware and software customization.

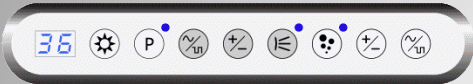
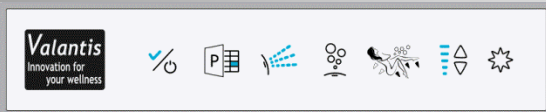
Therefore manufacturers of whirlpools can benefit of this technology to create innovative projects with total conformance of the respective sanitary norms at very reasonable price conditions.

And for the end users to enjoy functions like :

- ° AIR and JET regulation
- ° Massage programs
- ° Different cleaning solutions
- ° Control of the water temperature
- ° Lymphatic drainage (zoning)
- ° Chromotherapy lights with ultraflat spots or dot LEDs
- ° Control of whirlpool by smartphone
- ° And more ....

Inno  ation for your wellness

# PROFIMAX whirlpool concept



5V connection  
Typical use :  
Any Valantis panels

1 x  
5V connection  
for connection  
to other Profimax  
boards

2 x  
5V connection  
Typical use :  
Water level sensor  
Temperature sensor

8 x  
5V 3 wires connection  
Typical use :  
Antivandal push buttons

2 x  
5V 3 wires serial connection  
Typical use :  
RGB string LED dots,  
RGB strip LED up to 60 LEDs

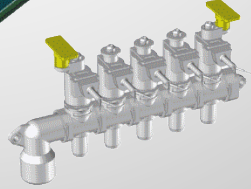
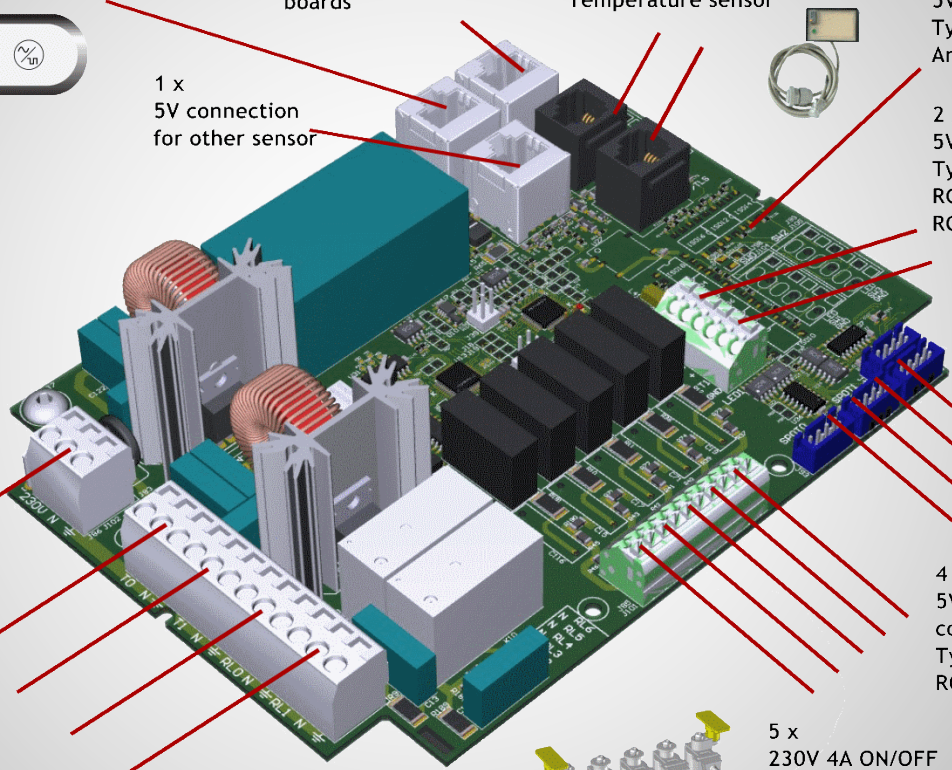
230V 16A 50Hz

2 x  
230V 6A variable  
connection (triac)  
Typical use :  
Pump / Blower

2 x  
230V 9A ON/OFF  
connection (Relays)  
Typical use :  
Heater / Pump / Blower

5 x  
230V 4A ON/OFF  
connection (relays)  
Typical use :  
Solenoid valves

4 x  
5V 4 wires  
connection  
Typical use :  
RGB spot light 1W



SELECTION GUIDE

COLLECTION "FIRST"		FUNCTIONS																					
		ON/OFF AIR +/- AIR	INTERVAL AIR	VARIATION AIR	ON/OFF WATER	+/- WATER	INTERVAL WATER	VARIATION WATER	WATER HEATER	MASSAGE Progr.	ZONING	TURBO (VENTURI) SPOT	RGB SPOT	RGB LED	DISINFECTION	OZONE	RINSING (FLUSH)	DRYING	TEMPERATURE	INFO ON DISPLAY	WIRELESS CONTROL		
	SYSTEM																						
	6APM	•	•	•	•								•	•	•							○	
	6EPM																					•	
	6PM	•	•	•	•	•							•	•	•	○						○	○
	6SIPM																					•	•
	6PPM	•	•	•	•	•							•	•	•	○						○	○
○ = option																							
Water level detection available with all systems																							
Customer configuration available upon request																							

## Panel First 6ARJ

Code VPF11038F1

## FEATURES

ON/OFF blower

Variation of blower flow (wave effect)

Interval blower

Manual blower power control (+/-)

Up to 2 RGB Spot lights (chromotherapy)

Up to 60 RGB string or strip LEDs (chromotherapy)

Water level control

Automatic drying disinfection

On demand drying disinfection



Rectangular chrome coated enclosure 106 x 25 mm  
 Thickness after mounting 4 mm  
 6 buttons / 1 LED's indicator  
 Cable length 2000 mm. fit out with  
 1 cable gland PG9, 1 nut and fast mounting plug  
 IP65 / ROHS

### Components (required)

Controller Profimax SA

Code VPF14052M1

Panel First 6ARJ

Code VPF11038F1

Water level sensor TLS1 RJ

Code 0010137620

### Options

\* Multiple choices  
 See related pages

Spot Chromo RGB 5V

Code VPF10031xx

RGB LEDs string

Code VPF14053xx

Plastic housing 23

Code BOBPLUxx

RGB LEDs strip

Code LASTRINGxx



Datasheet System First 6APM\_07.06.16\_02

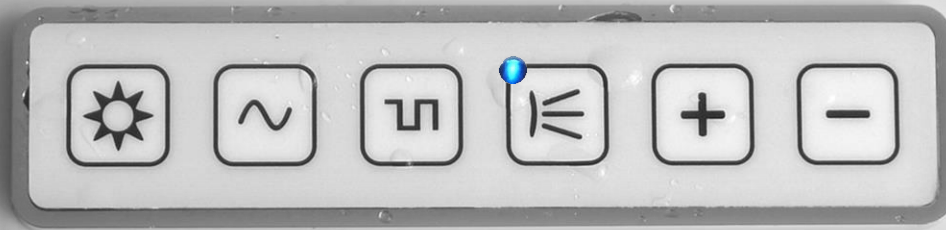


Datenblatt Whirlpoolsystem First 6APM\_07.06.16\_02



## Panel First 6ERJ

Code VPF11038G1



Rectangular chrome coated enclosure 106 x 25 mm  
 Thickness after mounting 4 mm  
 6 buttons / 1 LED's indicator  
 Cable length 2000 mm. fit out with  
 1 cable gland PG9, 1 nut and fast mounting plug  
 IP65 / ROHS

## FEATURES

- ON/OFF pump
- Variation of pump flow (wave effect)
- Interval pump
- Manual pump power control (+/-)
- Up to 2 RGB Spot lights (chromotherapy)
- Up to 60 RGB string or strip LEDs (chromotherapy)
- Water level control
- Water heater
- Chemical Disinfection
- Automatic rinsing disinfection
- On demand rinsing disinfection

### Components (required)

Controller Profimax M

Code VPF14052H1

OR

Controller Profimax SE

Code VPF14052L1

(without Water heater, Chemical disinfection and Rinsing disinfection)

Panel First 6ERJ

Code VPF11038G1

Water level sensor TLS1 RJ

Code 0010137620

### Options

\* Multiple choices  
 See related pages

Spot Chromo RGB 5V

Code VPF10031xx

\*

RGB LEDs string

Code VPF14053xx

\*

Plastic housing 23

Code BOBPLUxx

\*

RGB LEDs strip

Code LASTRINGxx

\*



[Datasheet System First 6EPM\\_07.06.16\\_02](#)



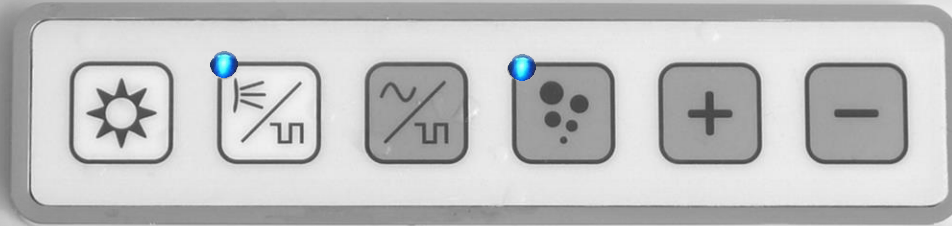
[Datenblatt Whirlpoolsystem First 6APM\\_07.06.16\\_02](#)





## Panel First 6RJ

Code VPF11038H1



Rectangular chrome coated enclosure 106 x 25 mm  
 Thickness after mounting 4 mm  
 6 buttons / 2 LED's indicator  
 Cable length 2000 mm. fit out with  
 1 cable gland PG9, 1 nut and fast mounting plug  
 IP65 / ROHS

## FEATURES

- ON/OFF pump
- Interval pump
- ON/OFF blower
- Variation of blower flow (wave effect)
- Interval blower
- Manual blower power control (+/-)
- Up to 2 RGB Spot lights (chromotherapy)
- Up to 60 RGB string or strip LEDs (chromotherapy)
- Water level control
- Water heater
- Chemical Disinfection
- Automatic rinsing disinfection
- Automatic drying disinfection
- On demand rinsing disinfection
- On demand drying disinfection

### Components (required)

Controller Profimax M

Code VPF14052H1

Panel First 6RJ

Code VPF11038H1

Water level sensor TLS1 RJ

Code 0010137620

### Options

\* Multiple choices  
 See related pages

Spot Chromo RGB 5V \*

Code VPF10031xx

RGB LEDs string \*

Code VPF14053xx

Plastic housing 23 \*

Code BOBPLUxx

RGB LEDs strip \*

Code LASTRINGxx



[Datasheet System First 6PM\\_07.06.16\\_02](#)



[Datenblatt Whirlpoolsystem First 6PM\\_07.06.16\\_02](#)



## Panel First 6PRJ

Code VPF11038J1



2 MASSAGE  
PROGRAMS

Rectangular chrome coated enclosure 106 x 25 mm  
 Thickness after mounting 4 mm  
 6 buttons / 3 LED's indicator  
 Cable length 2000 mm. fit out with  
 1 cable gland PG9, 1 nut and fast mounting plug  
 IP65 / ROHS

## FEATURES

- ON/OFF pump
- Interval pump
- ON/OFF blower
- Variation of blower flow (wave effect)
- Interval blower
- Manual blower power control (+/-)
- 2 massage programs
- Up to 2 RGB Spot lights (chromotherapy)
- Up to 60 RGB string or strip LEDs (chromotherapy)
- Water level control
- Water heater
- Chemical Disinfection
- Automatic rinsing disinfection
- Automatic drying disinfection
- On demand rinsing disinfection
- On demand drying disinfection

## Components (required)

Controller Profimax M

Code VPF14052H1

Panel First 6PRJ

Code VPF11038J1

Water level sensor TLS1 RJ

Code 0010137620

## Options

\* Multiple choices  
 See related pages

Spot Chromo RGB 5V

Code VPF10031xx

RGB LEDs string

Code VPF14053xx

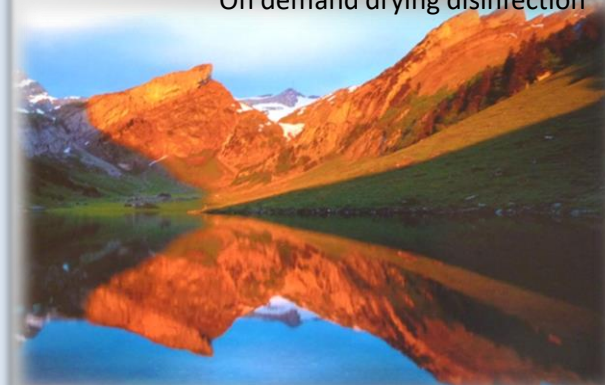
Plastic housing 23

Code BOBPLUxx

RGB LEDs strip

Code LASTRINGxx


[Datasheet System First 6PPM\\_07.06.16\\_02](#)

[Datenblatt Whirlpoolsystem First 6PPM\\_07.06.16\\_02](#)


## Panel First 6SIRJ

Code VPF1103811



Rectangular chrome coated enclosure 106 x 25 mm  
 Thickness after mounting 4 mm  
 6 buttons / 3 LED's indicator  
 Cable length 2000 mm. fit out with  
 1 cable gland PG9, 1 nut and fast mounting plug  
 IP65 / ROHS

## FEATURES

- ON/OFF pump
- Interval / Venturi
- ON/OFF blower
- Variation of blower flow (wave effect)
- Manual blower power control (+/-)
- Up to 2 RGB Spot lights (chromotherapy)
- Up to 60 RGB string or strip LEDs (chromotherapy)
- Water level control
- Automatic rinsing disinfection
- Automatic drying disinfection
- On demand rinsing disinfection
- On demand drying disinfection

### Components (required)

Controller Profimax M

Code VPF14052H1

Panel First 6SIRJ

Code VPF1103811

Water level sensor TLS1 RJ

Code 0010137620

### Options

\* Multiple choices  
 See related pages

Spot Chromo RGB 5V \*

Code VPF10031xx

RGB LEDs string \*

Code VPF14053xx

Plastic housing 23 \*

Code BOBPLUxx

RGB LEDs strip \*

Code LASTRINGxx



[Datasheet System First 6SIPM\\_07.06.16\\_02](#)



[Datenblatt Whirlpoolsystem First 6SIPM\\_07.06.16\\_02](#)



SELECTION GUIDE

COLLECTION "CONQUEST"		FUNCTIONS																					
		ON/OFF AIR +/- AIR	INTERVAL AIR	VARIATION AIR	ON/OFF WATER	+/- WATER	INTERVAL WATER	VARIATION WATER	WATER HEATER	MASSAGE PROGR.	ZONING	TURBO (VENTURI)	SPOT	RGB SPOT	RGB LED	DISINFECTION	OZONE	RINSING (FLUSH)	DRYING	TEMPERATURE	INFO ON DISPLAY	WIRELESS CONTROL	
	SYSTEM																						
	6APM	•	•	•	•								•	•	•					○		○	
	6EPM					•	•	•	•	•			•	•	•	○			○				○
	6PM	•	•	•	•	•			•	•			•	•	•	○			○	○			○
	7PM	•	•	•	•	•	•	•	•	•			•	•	•	○			○	○			○
	7D4PM	•	•	•	•	•	•	•	•	•			•	•	•	○			○	○	•	•	○
	6D2PM	•	•	•	•	•			•	•			•	•	•	○			○	○	•	•	○
	8D2PPM	•	•	•	•	•	•	•	•	•			•	•	•	○			○	○	•	•	○
	8D2PZPM	•	•	•	•	•			•	•	•	•	•	•	•	○			○	○	•	•	○
○ = option		Water level detection available with all systems Customer configuration available upon request																					

## Panel Conquest 6ARJ

Code VPF09026AW1



Oblong chrome coated enclosure 174 x 30 mm  
 Thickness after mounting 1.5 mm only  
 6 buttons / 1 LED's indicator  
 Cable length 2000 mm. fit out with  
 1 cable gland PG9, 1 nut and fast mounting plug  
 IP65 / ROHS

## FEATURES

- ON/OFF blower
- Variation of blower flow (wave effect)
- Interval blower
- Manual blower power control (+/-)
- Up to 2 RGB Spot lights (chromotherapy)
- Up to 60 RGB string or strip LEDs (chromotherapy)
- Water level control
- Automatic drying disinfection
- On demand drying disinfection
- Wireless control

### Components (required)

Controller Profimax SA

Code VPF14052M1

Panel Conquest 6ARJ

Code VPF09026AW1

Water level sensor TLS1 RJ

Code 0010137620

### Options

\* Multiple choices  
 See related pages

Spot Chromo RGB 5V

Code VPF10031xx

\*

RGB LEDs string

Code VPF14053xx

\*

Plastic housing 23

Code BOBPLUxx

\*

RGB LEDs strip

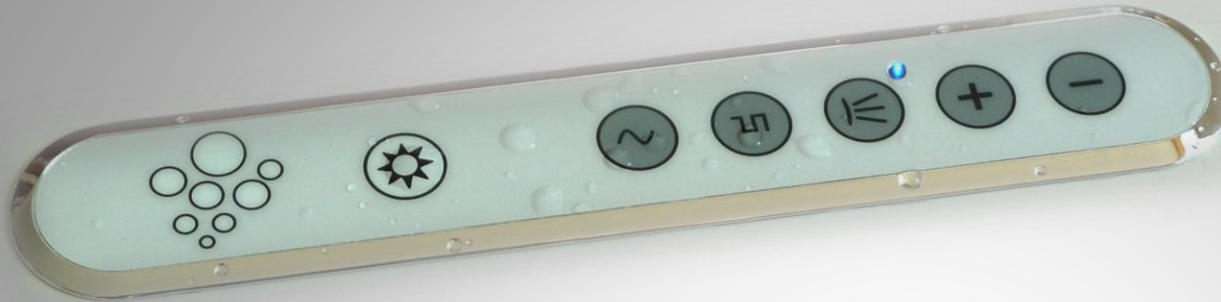
Code LASTRINGxx

\*



## Panel Conquest 6ERJ

Code VPF09026AV1



Oblong chrome coated enclosure 174 x 30 mm  
 Thickness after mounting 1.5 mm only  
 6 buttons / 1 LED's indicator  
 Cable length 2000 mm. fit out with  
 1 cable gland PG9, 1 nut and fast mounting plug  
 IP65 / ROHS

## FEATURES

- ON/OFF pump
- Variation of pump flow (wave effect)
- Interval pump
- Manual pump power control (+/-)
- Up to 2 RGB Spot lights (chromotherapy)
- Up to 60 RGB string or strip LEDs (chromotherapy)
- Water level control
- Water heater
- Chemical Disinfection
- Automatic rinsing disinfection
- On demand rinsing disinfection
- Wireless control

### Components (required)

Controller Profimax M

Code VPF14052H1

OR

Controller Profimax SE

Code VPF14052L1

(without Water heater, Chemical disinfection and Rinsing disinfection)

Panel Conquest 6ERJ

Code VPF09026AV1

Water level sensor TLS1 RJ

Code 0010137620

### Options

\* Multiple choices  
 See related pages

Spot Chromo RGB 5V \*

Code VPF10031xx

RGB LEDs string \*

Code VPF14053xx

Plastic housing 23 \*

Code BOBPLUxx

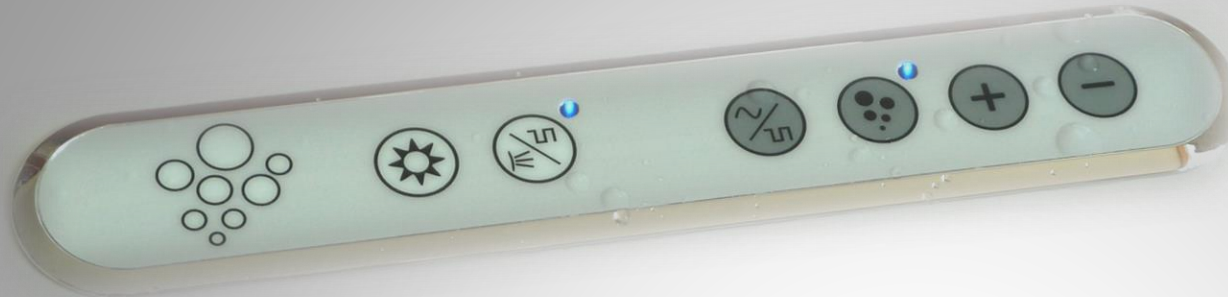
RGB LEDs strip \*

Code LASTRINGxx



## Panel Conquest 6RJ

Code VPF09026AU1



Oblong chrome coated enclosure 174 x 30 mm  
 Thickness after mounting 1.5 mm only  
 6 buttons / 2 LED's indicator  
 Cable length 2000 mm. fit out with  
 1 cable gland PG9, 1 nut and fast mounting plug  
 IP65 / ROHS

## FEATURES

- ON/OFF pump
- Interval pump
- ON/OFF blower
- Variation of blower flow (wave effect)
- Interval blower
- Manual blower power control (+/-)
- Up to 2 RGB Spot lights (chromotherapy)
- Up to 60 RGB string or strip LEDs (chromotherapy)
- Water level control
- Water heater
- Chemical Disinfection
- Automatic rinsing disinfection
- Automatic drying disinfection
- On demand rinsing disinfection
- On demand drying disinfection
- Wireless control

### Components (required)

Controller Profimax M

Code VPF14052H1

Panel Conquest 6RJ

Code VPF09026AU1

Water level sensor TLS1 RJ

Code 0010137620

### Options

\* Multiple choices  
 See related pages

Spot Chromo RGB 5V \*

Code VPF10031xx

RGB LEDs string \*

Code VPF14053xx

Plastic housing 23 \*

Code BOBPLUxx

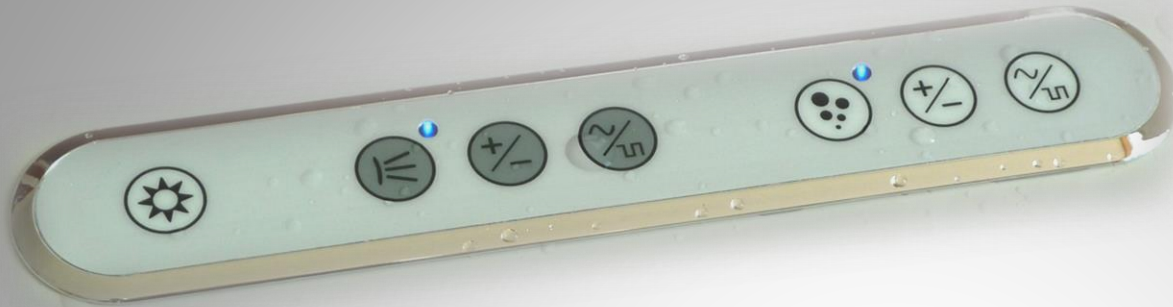
RGB LEDs strip \*

Code LASTRINGxx



## Panel Conquest 7RJ

Code VPF09026AT1



Oblong chrome coated enclosure 174 x 30 mm  
 Thickness after mounting 1.5 mm only  
 7 buttons / 2 LED's indicator  
 Cable length 2000 mm. fit out with  
 1 cable gland PG9, 1 nut and fast mounting plug  
 IP65 / ROHS

## FEATURES

- ON/OFF pump
- Variation of pump flow (wave effect)
- Interval pump
- Manual pump power control (+/-)
- ON/OFF blower
- Variation of blower flow (wave effect)
- Interval blower
- Manual blower power control (+/-)
- Up to 2 RGB Spot lights (chromotherapy)
- Up to 60 RGB string or strip LEDs (chromotherapy)
- Water level control
- Water heater
- Chemical disinfection
- Automatic rinsing disinfection
- Automatic drying disinfection
- On demand rinsing disinfection
- On demand drying disinfection
- Wireless control

### Components (required)

Controller Profimax M

Code VPF14052H1

Panel Conquest 7RJ

Code VPF09026AT1

Water level sensor TLS1 RJ

Code 0010137620

### Options

\* Multiple choices  
 See related pages

Spot Chromo RGB 5V \*

Code VPF10031xx

RGB LEDs string \*

Code VPF14053xx

Plastic housing 23 \*

Code BOBPLUxx

RGB LEDs strip \*

Code LASTRINGxx





## Panel Conquest 7D4

Code VPF09026AQ1



Oblong chrome coated enclosure 174 x 30 mm  
 Thickness after mounting 1.5 mm only  
 7 buttons / 2 LED's indicator / 4 digits display  
 Cable length 2000 mm. fit out with  
 1 cable gland PG9, 1 nut and fast mounting plug  
 IP65 / ROHS

## FEATURES

- ON/OFF pump
- Variation of pump flow (wave effect)
- Interval pump
- Manual pump power control (+/-)
- ON/OFF blower
- Variation of blower flow (wave effect)
- Interval blower
- Manual blower power control (+/-)
- Temperature display of water
- Display of several bath's states
- Up to 4 RGB Spot lights (chromotherapy)
- Up to 60 RGB string or strip LEDs (chromotherapy)
- Water level control
- Water heater
- Chemical Disinfection
- Automatic rinsing disinfection
- Automatic drying disinfection
- On demand rinsing disinfection
- On demand drying disinfection
- Wireless control

### Components (required)

- Controller Profimax XL  
Code VPF14052G1
- Panel Conquest 7D4  
Code VPF09026Q1
- Water level sensor TLS1 RJ  
Code 0010137620
- Temperature sensor \*  
Code VPF07001xx

### Options

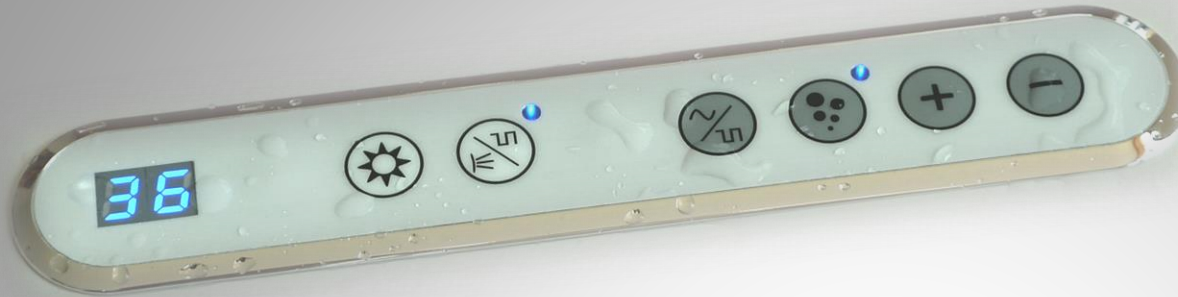
\* Multiple choices  
 See related pages

- Spot Chromo RGB 5V \*  
Code VPF10031xx
- RGB LEDs string \*  
Code VPF14053xx
- Plastic housing 23 \*  
Code BOBPLUxx
- RGB LEDs strip \*  
Code LASTRINGxx



## Panel Conquest 6D2

Code VPF09026AO1



Oblong chrome coated enclosure 174 x 30 mm  
 Thickness after mounting 1.5 mm only  
 6 buttons / 2 LED's indicator / 2 digits display  
 Cable length 2000 mm. fit out with  
 1 cable gland PG9, 1 nut and fast mounting plug  
 IP65 / ROHS

## FEATURES

- ON/OFF pump
- Interval pump
- ON/OFF blower
- Variation of blower flow (wave effect)
- Interval blower
- Manual blower power control (+/-)
- Temperature display of water
- Display of several bath's states
- Up to 4 RGB Spot lights (chromotherapy)
- Up to 60 RGB string or strip LEDs (chromotherapy)
- Water level control
- Water heater
- Chemical Disinfection
- Automatic rinsing disinfection
- Automatic drying disinfection
- On demand rinsing disinfection
- On demand drying disinfection
- Wireless control

### Components (required)

- Controller Profimax XL  
Code VPF14052G1
- Panel Conquest 6D2  
Code VPF09026AO1
- Water level sensor TLS1 RJ  
Code 0010137620
- Temperature sensor \*  
Code VPF07001xx

### Options

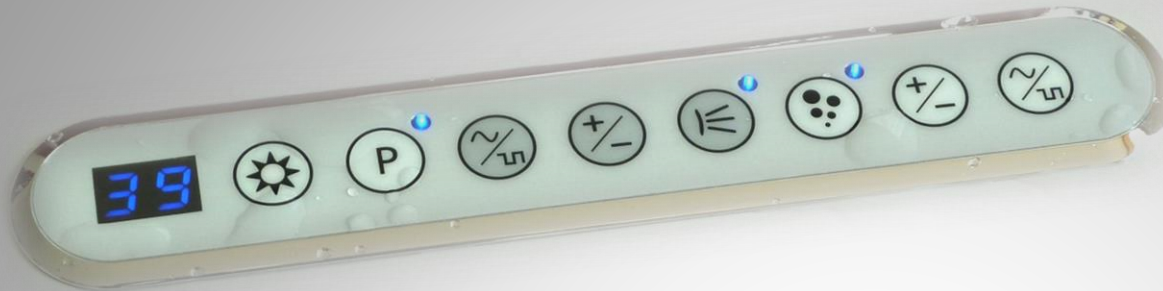
\* Multiple choices  
 See related pages

- Spot Chromo RGB 5V \*
- Code VPF10031xx
- RGB LEDs string \*
- Code VPF14053xx
- Plastic housing 23 \*
- Code BOBPLUxx
- RGB LEDs strip \*
- Code LASTRINGxx



# Panel Conquest 8D2P

Code VPF09026Y1



**2 MASSAGE PROGRAMS**

Oblong chrome coated enclosure 174 x 30 mm  
 Thickness after mounting 1.5 mm only  
 8 buttons / 3 LED's indicator / 2 digits display  
 Cable length 2000 mm. fit out with  
 1 cable gland PG9, 1 nut and fast mounting plug  
 IP65 / ROHS

## FEATURES

- ON/OFF pump
- Variation of pump flow (wave effect)
- Interval pump
- Manual pump power control (+/-)
- ON/OFF blower
- Variation of blower flow (wave effect)
- Interval blower
- Manual blower power control (+/-)
- 2 massage programs
- Temperature display of water
- Display of several bath's states
- Up to 4 RGB Spot lights (chromotherapy)
- Up to 60 RGB string or strip LEDs (chromotherapy)
- Water level control
- Water heater
- Chemical Disinfection
- Automatic rinsing disinfection
- Automatic drying disinfection
- On demand rinsing disinfection
- On demand drying disinfection
- Wireless control

### Components (required)

- Controller Profimax XL  
Code VPF14052G1
- Panel Conquest 8D2P  
Code VPF09026Y1
- Water level sensor TLS1 RJ  
Code 0010137620
- Temperature sensor \*  
Code VPF07001xx

### Options

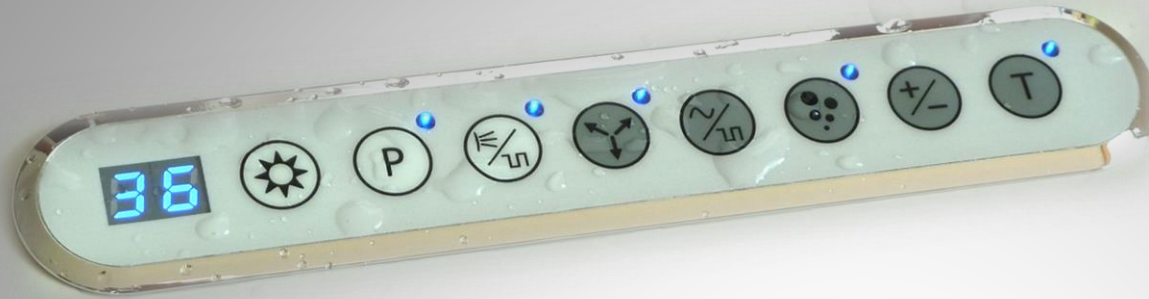
\* Multiple choices  
 See related pages

- Spot Chromo RGB 5V \*  
Code VPF10031xx
- RGB LEDs string \*  
Code VPF14053xx
- Plastic housing 23 \*  
Code BOBPLUxx
- RGB LEDs strip \*  
Code LASTRINGxx



# Panel Conquest 8D2PZ

Code VPF09026Z1



**TURBO  
ZONING  
MESSAGE PROGRAMS**

Oblong chrome coated enclosure 174 x 30 mm  
 Thickness after mounting 1.5 mm only  
 8 buttons / 5 LED's indicator / 2 digits display  
 Cable length 2000 mm. fit out with  
 1 cable gland PG9, 1 nut and fast mounting plug  
 IP65 / ROHS

## FEATURES

- ON/OFF pump
- Interval pump
- ON/OFF blower

Variation of blower flow (wave effect)

Interval blower

Manual blower power control (+/-)

4 ways zoning

Turbo

4 massage programs

Up to 4 RGB Spot lights (chromotherapy)

Up to 60 RGB string or strip LEDs (chromotherapy)

Temperature display of water

Display of several bath's states

Water level control

Automatic drying disinfection

On demand drying disinfection

Wireless control

## Components (required)

Controller Profimax XL1

Code VPF1405211

Panel Conquest 8D2PZ

Code VPF09026Z1

Water level sensor TLS1 RJ

Code 0010137620

Temperature sensor \*

Code VPF07001xx

## Options

\* Multiple choices  
 See related pages

Spot Chromo RGB 5V \*

Code VPF10031xx

RGB LEDs string \*

Code VPF14053xx

Plastic housing 23 \*

Code BOBPLUxx

RGB LEDs strip \*

Code LASTRINGxx





SELECTION GUIDE

COLLECTION "PB LINE"		FUNCTIONS																					
		ON/OFF AIR +/- AIR	INTERVAL AIR	VARIATION AIR	ON/OFF WATER	+/- WATER	INTERVAL WATER	VARIATION WATER	WATER HEATER	MASSAGE PROGR.	ZONING	TURBO (VENTURI)	SPOT	RGB SPOT	RGB LED	DISINFECTION	OZONE	RINSING (FLUSH)	DRYING	TEMPERATURE	INFO ON DISPLAY	WIRELESS CONTROL	
SYSTEM																							
2APM		•	•										•	•	•					•			○
4EPM				•	•	•						•	•	•	•		•	•					○
From 1 to 8 buttons		Several possibilities available																					
○ = option																							
Water level detection available with all systems																							
Customer configuration available upon request																							

## PB 2APM



Stainless steel, gold plated, etc.  
Possibility of symbol engraving

Available with following LED colours :



Code  
LA5026112



Code  
LA5226112



Code  
LA5126112



Code  
LA5326112



Code  
LA5526112

2 Anti-vandal push button  
Thickness after mounting 1 mm  
Cable length 2000 mm. for connection  
with PB interface control box  
IP67 / ROHS

## FEATURES

- ON/OFF blower
- Variation of blower flow (wave effect)
- 3 levels of blower speed
- Up to 4 RGB Spot lights (chromotherapy)
- Up to 60 RGB string or strip LEDs (chromotherapy)
- Water level control
- Automatic drying disinfection
- On demand drying disinfection

### Components (required)

Controller Profimax SASS4S

Code VPF14052S1

Push button

Code : see above

Water level sensor TLS1 RJ

Code 0010137620

### Options

Spot Chromo RGB 5V \*

Code VPF10031xx

RGB LEDs string \*

Code VPF14053xx

Plastic housing 23 \*

Code BOBPLUxx

RGB LEDs strip \*

Code LASTRINGxx



[Datasheet System PB 2APM\\_18.02.17\\_05](#)



## PB 4EPM



Stainless steel, gold plated, etc.  
Possibility of symbol engraving

Available with following LED colours :



Code  
LA5026112



Code  
LA5226112



Code  
LA5126112



Code  
LA5326112



Code  
LA5526112

3 Anti-vandal push button  
Thickness after mounting 1 mm  
Cable length 2000 mm. for connection  
with controller Profibox  
IP67 / ROHS

## FEATURES

ON/OFF pump

Interval / Venturi

Ozone

Water heater

Up to 4 RGB Spot lights (chromotherapy)

Up to 60 RGB string or strip LEDs (chromotherapy)

Water level control

Automatic rinsing disinfection

On demand rinsing disinfection

### Components (required)

Controller Profimax PB  
Code VPF1405201

Push button  
Code : see above

Water level sensor TLS1 RJ  
Code 0010137620

### Options

\* Multiple choices  
See related pages

Spot Chromo RGB 5V \*

Code VPF10031xx

RGB LEDs string \*

Code VPF14053xx

Plastic housing 23 \*

Code BOBPLUxx

RGB LEDs strip \*

Code LASTRINGxx



[Datasheet System PB 4EPM\\_18.02.17\\_08](#)







SELECTION GUIDE

COLLECTION "TACTILIS"		FUNCTIONS																			
		ON/OFF AIR +/- AIR	INTERVAL AIR	VARIATION AIR	ON/OFF WATER	+/- WATER	INTERVAL WATER	VARIATION WATER	WATER HEATER	MASSAGE PROGR.	ZONING	TURBO (VENTURI) SPOT	RGB SPOT	RGB LED	DISINFECTION	OZONE	RINSING (FLUSH)	DRYING	TEMPERATURE	INFO ON DISPLAY	WIRELESS CONTROL
	SYSTEM																				
	7	•	•	•	•	•	•	•	•	•	•	•	•	•	•	•	•	•	•	•	•
	7D2HA	• 2	• 2	• 2	•	•								•	•	•			•	•	•
	7D	•	•	•	•	•	•	•	•	•	•	•	•	•	•	•	•	•	•	•	•
	7DZC	•	•	•	•	•	•	•	•	•	•	•	•	•	•	•	•	•	•	•	•

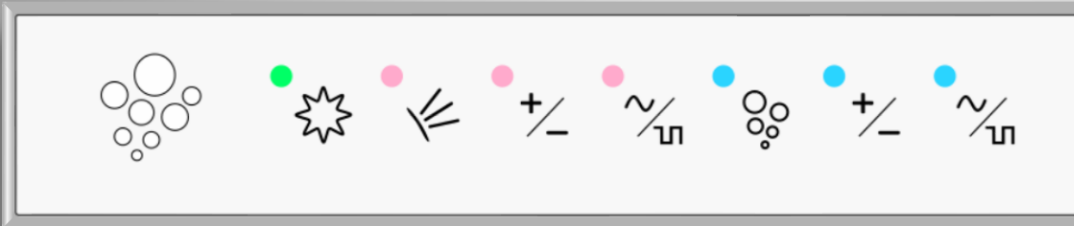
○ = option

Water level detection available with all systems

Customer configuration available upon request

## Panel Tactilis 7

Code VPF11035Q1



Rectangular keypad 197 x 41 mm  
 Thickness after mounting 2 mm  
 7 buttons / 7 LED's indicator  
 Cable length 2000 mm. fit out with  
 1 cable gland PG9, 1 nut and fast mounting plug  
 IP65 / ROHS

## FEATURES

- ON/OFF pump
- Variation of pump flow (wave effect)
- Interval pump
- Manual pump power control (+/-)
- ON/OFF blower
- Variation of blower flow (wave effect)
- Interval blower
- Manual blower power control (+/-)
- Up to 2 RGB Spot lights (chromotherapy)
- Up to 60 RGB string or strip LEDs (chromotherapy)
- Water level control
- Water heater
- Chemical disinfection
- Automatic rinsing disinfection
- Automatic drying disinfection
- On demand rinsing disinfection
- On demand drying disinfection
- Wireless control

### Components (required)

- Controller Profimax M  
Code VPF14052H1
- Panel Tactilis 7  
Code VPF11035Q1
- Cable assembly GEN 00003  
Code PLACA000003
- Water level sensor TLS1 RJ  
Code 0010137620

### Options

\* Multiple choices  
 See related pages

- Spot Chromo RGB 5V \*  
Code VPF10031xx
- RGB LEDs string \*  
Code VPF14053xx
- Plastic housing 23 \*  
Code BOBPLUxx
- RGB LEDs strip \*  
Code LASTRINGxx



## Panel Tactilis 7D2HA

Code VPF11035P1



Rectangular keypad 197 x 41 mm  
 Thickness after mounting 2 mm  
 7 buttons / 3 LED's indicator  
 2 digits display  
 Cable length 2000 mm. fit out with  
 1 cable gland PG9, 1 nut and fast mounting plug  
 IP65 / ROHS

## FEATURES

- ON/OFF pump
- Interval pump
- ON/OFF blowers 1 + 2
- Variation of blowers flow 1 + 2 (wave effect)
- Interval blowers 1 + 2
- Manual blowers 1 + 2 power control (+/-)
- Temperature display of water
- Display of several bath's states
- Up to 4 RGB Spot lights (chromotherapy)
- Up to 60 RGB string or strip LEDs (chromotherapy)
- Water level control
- Automatic rinsing disinfection
- Automatic drying disinfection
- On demand rinsing disinfection
- On demand drying disinfection

### Components (required)

- Controller Profimax XL  
Code VPF14052G1
- Panel Tactilis 7D2HA  
Code VPF11035P1
- Cable assembly GEN 00003  
Code PLACA000003
- Water level sensor TLS1  
Code 0010137620
- Temperature sensor \*  
Code VPF07001xx

### Options

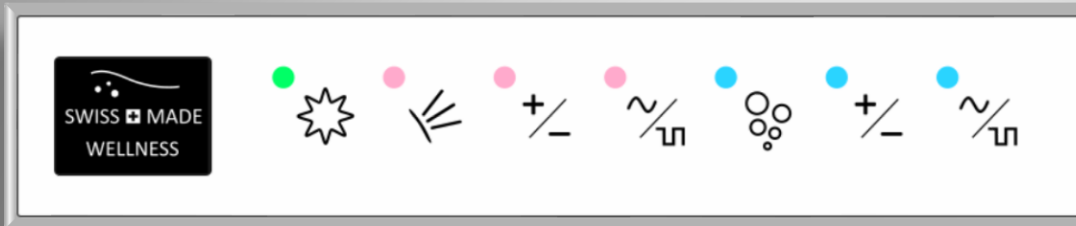
\* Multiple choices  
 See related pages

- Spot Chromo RGB 5V \*
- Code VPF10031xx
- RGB LEDs string \*
- Code VPF14053xx
- Plastic housing 23 \*
- Code BOBPLUxx
- RGB LEDs strip \*
- Code LASTRINGxx



## Panel Tactilis 7D

Code VPF11035R1



Rectangular keypad 197 x 41 mm  
 Thickness after mounting 2 mm  
 7 buttons / 7 LED's indicator  
 Full matrix OLED display  
 Cable length 2000 mm. fit out with  
 1 cable gland PG9, 1 nut and fast mounting plug  
 IP65 / ROHS

## FEATURES

- ON/OFF pump
- Variation of pump flow (wave effect)
- Interval pump
- Manual pump power control (+/-)
- ON/OFF blower
- Variation of blower flow (wave effect)
- Interval blower
- Manual blower power control (+/-)
- Temperature display of water
- Display of several bath's states
- Up to 4 RGB Spot lights (chromotherapy)
- Up to 60 RGB string or strip LEDs (chromotherapy)
- Water level control
- Water heater
- Chemical disinfection
- Automatic rinsing disinfection
- Automatic drying disinfection
- On demand rinsing disinfection
- On demand drying disinfection
- Wireless control

### Components (required)

- Controller Profimax XL  
Code VPF14052G1
- Panel Tactilis 7D  
Code VPF11035R1
- Cable assembly GEN 00003  
Code PLACA000003
- Water level sensor TLS1  
Code 0010137620
- Temperature sensor \*  
Code VPF07001xx

### Options

\* Multiple choices  
 See related pages

- Spot Chromo RGB 5V \*
- Code VPF10031xx
- RGB LEDs string \*
- Code VPF14053xx
- Plastic housing 23 \*
- Code BOBPLUxx
- RGB LEDs strip \*
- Code LASTRINGxx



## Panel Tactilis 7DZCEX

Code VPF11035N1



**HIGH END SYSTEM, ALL INCLUSIVE**

Rectangular keypad 197 x 41 mm  
 Thickness after mounting 2 mm  
 7 buttons / 7 LED's indicator  
 Full matrix OLED display  
 Cable length 2000 mm. fit out with  
 1 cable gland PG9, 1 nut and fast mounting plug  
 IP65 / ROHS

## FEATURES

- ON/OFF pump
- Interval pump
- ON/OFF blower
- Variation of blower flow (wave effect)
- Interval blower
- Manual blower power control (+/-)
- 5 ways zoning with LEDs indicator
- 4 massage programs
- Showroom mode
- Temperature display of water
- Display of several bath's states
- Up to 4 RGB Spot lights (chromotherapy)
- Up to 60 RGB string or strip LEDs (chromotherapy)
- Water heater
- Water level control
- Chemical disinfection
- Automatic drying disinfection
- On demand drying disinfection
- Wireless control

### Components (required)

Controller Profimax XXL

Code VPF14052K1

Panel Tactilis 7DZCEX

Code VPF11035N1

Cable assembly GEN 00003

Code PLACA000003

Water level sensor TLS1

Code 0010137620

Temperature sensor \*

Code VPF07001xx

5 Ways zoning valve with cables

Code VPF15058C1

### Options

\* Multiple choices  
 See related pages

Spot Chromo \*

Code VPF10031A1

RGB LEDs string \*

Code VPF14053xx

Plastic housing 23 \*

Code BOBPLUxx

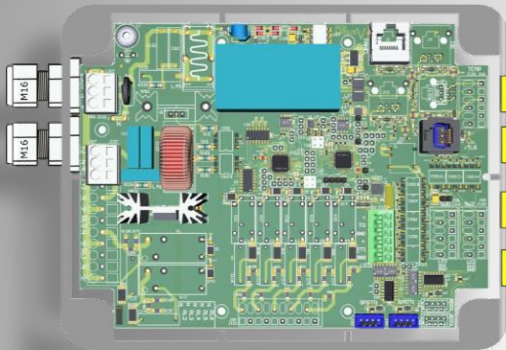
RGB LEDs strip \*

Code LASTRINGxx



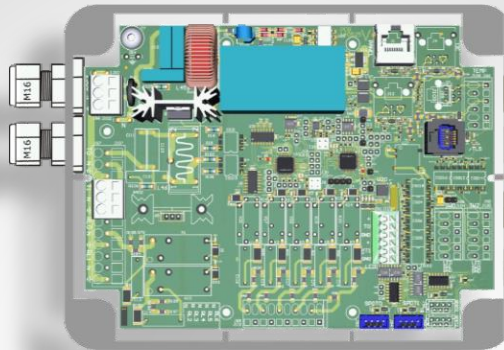


Controller Profimax SA  
Code VPF14052M1



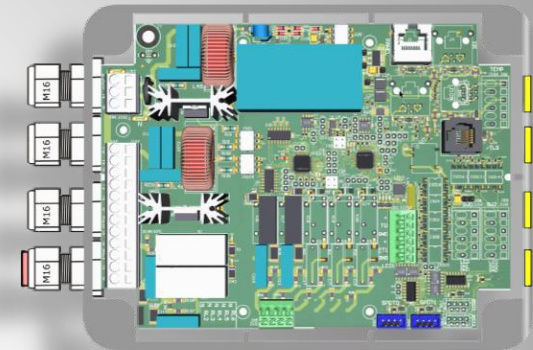
Control box 230V 50 Hz 16A  
1 variable 230V connections (triacs)  
6 low power 5V connections  
Plastic enclosure 200x155x80 mm  
Fit out with :  
2 cable glands M16 for cable diam.  
4.5-10 mm  
4 holes diam. 16 mm  
IP56 / ROHS

Controller Profimax SE  
Code VPF14052K1



Control box 230V 50 Hz 16A  
1 variable 230V connections (triacs)  
6 low power 5V connections  
Plastic enclosure 200x155x80 mm  
Fit out with :  
2 cable glands M16 for cable diam.  
4.5-10 mm  
4 holes diam. 16 mm  
IP56 / ROHS

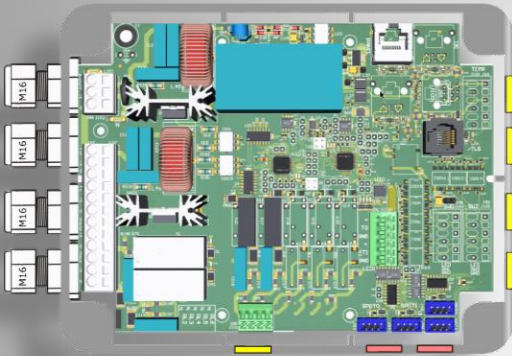
Controller Profimax M  
Code VPF14052H1



Control box 230V 50 Hz 16A  
2 variable 230V connections (triacs)  
4 ON/OFF 230V connections (relays)  
6 low power 5V connections  
Plastic enclosure 200x155x80 mm  
Fit out with :  
4 cable glands M16 for cable diam.  
4.5-10 mm  
1 grommets (shutters) M16  
4 holes diam. 16 mm  
IP56 / ROHS

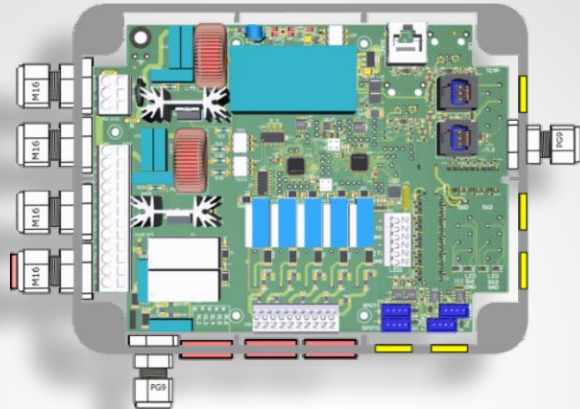


Controller Profimax M4S  
Code VPF14052J1



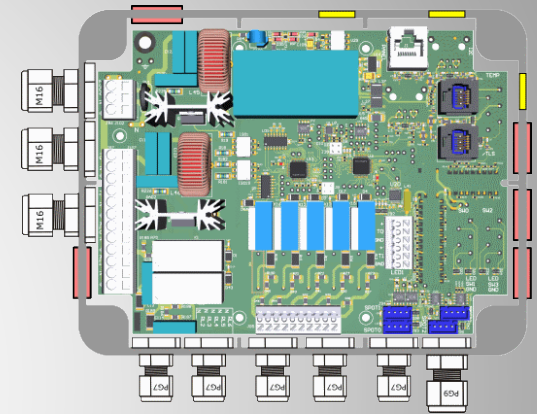
Control box 230V 50 Hz 16A  
2 variable 230V connections (triacs)  
4 ON/OFF 230V connections (relays)  
8 low power 5V connections  
Plastic enclosure 200x155x80 mm  
Fit out with :  
4 cable glands M16 for cable diam.  
4.5-10 mm  
2 grommets (shutters) M16  
5 holes diam. 16 mm  
IP56 / ROHS

Controller Profimax XL  
Code VPF14052G1



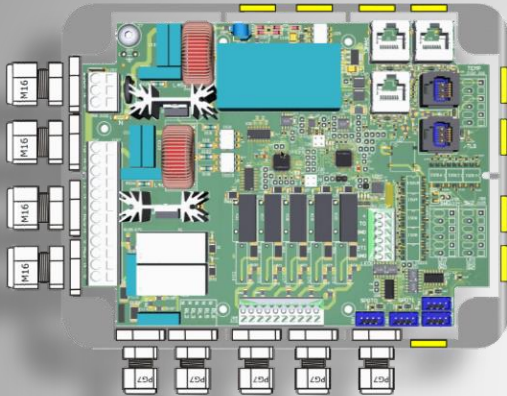
Control box 230V 50 Hz 16A  
2 variable 230V connections (triacs)  
7 ON/OFF 230V connections (relays)  
9 low power 5V connections  
Plastic enclosure 200x155x80 mm  
Fit out with :  
4 cable glands M16 for cable diam.  
4.5-10 mm  
2 cable glands PG9 for cable diam.  
3-8 mm  
5 grommets (shutters) M16  
5 holes diam. 16 mm  
IP56 / ROHS

Controller Profimax XL1  
Code VPF14052I1



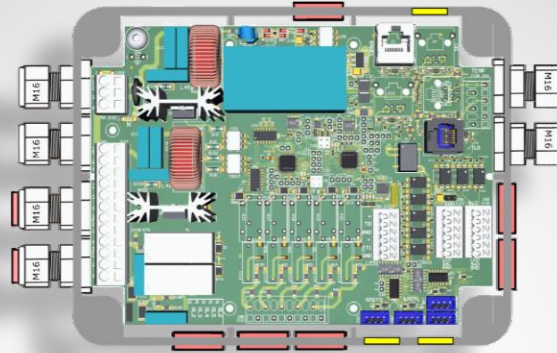
Control box 230V 50 Hz 16A  
2 variable 230V connections (triacs)  
7 ON/OFF 230V connections (relays)  
9 low power 5V connections  
Plastic enclosure 200x155x80 mm  
Fit out with :  
1 cable glands M16 for cable diam.  
4.5-10 mm  
2 cable glands PG9 for cable diam.  
3-8 mm  
5 cable glands PG7 for cable diam.  
2.5-6.5 mm  
5 grommets (shutters) M16  
3 holes diam. 16 mm  
IP56 / ROHS

Controller Profimax XXL  
Code VPF14052K1



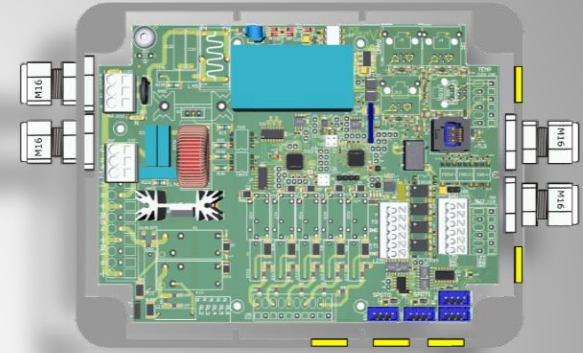
Control box 230V 50 Hz 16A  
 2 variable 230V connections (triacs)  
 7 ON/OFF 230V connections (relays)  
 11 low power 5V connections  
 Plastic enclosure 200x155x80 mm  
 Fit out with :  
 4 cable glands M16 for cable diam.  
 4.5-10 mm  
 5 cable glands PG7 for cable diam.  
 2.5-6.5 mm  
 9 holes diam. 16 mm  
 IP56 / ROHS

Controller Profimax PB  
Code VPF14052O1



Control box 230V 50 Hz 16A  
 2 variable 230V connections (triacs)  
 2 ON/OFF 230V connections (relays)  
 12 low power 5V connections  
 Plastic enclosure 200x155x80 mm  
 Fit out with :  
 6 cable glands M16 for cable diam.  
 4.5-10 mm  
 8 grommets (shutters) M16  
 3 holes diam. 16 mm  
 IP56 / ROHS

Controller Profimax SASS4S  
Code VPF14052S1



Control box 230V 50 Hz 16A  
 1 variable 230V connections (triacs)  
 5 low power 5V connections + 2 Option  
 Plastic enclosure 200x155x80 mm  
 Fit out with :  
 4 cable glands M16 for cable diam.  
 4.5-10 mm  
 5 holes diam. 16 mm  
 IP56 / ROHS

Water level sensor TLS1  
Code 0010137600



5V sensor  
Plastic enclosure 45 x 30 x 15mm  
1 LED indicator  
Adjustable by trimmer  
Cable length 1800 mm. IP65  
ROHS

Temperature sensor SW1  
Code VPF07001C1



5V encapsulated sensor  
Length approx. 20 mm  
Diam. approx. 6 mm.  
Accuracy +/- 0.5°C  
Cable length 1800 mm.  
IP65 / ROHS

Temperature sensor SI  
Code VPF07001D1



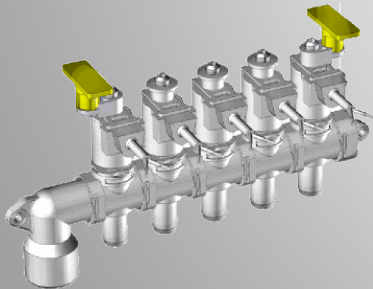
5V encapsulated sensor  
Into PVC plug 1/2"  
Length approx. 27 mm  
Diam. approx. 31 mm.  
Accuracy +/- 0.5°C  
Cable length 1800 mm.  
IP65 / ROHS

Cable Assembly Panel GEN3  
Code PLACA000003

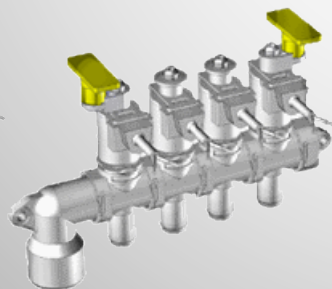


Cable LiVY 4C x 0.14mm2  
Shielded  
Mounted with :  
- 2 plug RJ45 shielded  
- 1 PG9 + nut  
Length 1500 mm.

5 Ways zoning valves AL  
Code VPF15058D1



4 Ways zoning valves AL  
Code VPF15058E1



1 Way zoning valve AL  
Code VPF15058B1



Elbow for zoning Valve AL  
Code VPF15058F1



Stop plug for zoning valve AL  
Code VPF15058G1



Cable for zoning valve AL  
Code VPF15058H1



# PROFIMINI whirlpool concept



PROFIMINI ...

**... a competitive integrated electronic solution !**

VALANTIS launches in 2019 the new controller **PROFIMINI** for hydromassage whirlpool baths.

This solution is a declinaison of PROFIMAX concept. Size of the controller has been reduced.

It is the ideal product for mounting in confined spaces.

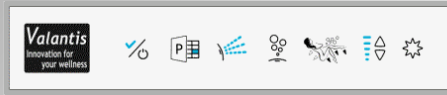
A rich range of functions and connectivity is proposed.

Panel and accessoires schow in the present catalogue are fully compatible with this new controller.

Same as his big brother, PROFIMINI also offers a total hardware and software customization.

Manufacturers of whirlpools will appreciate this very integrated product to create innovative projects with total respect of the sanitary norms.

# PROFIMINI whirlpool concept



1x  
5V connection  
Water level sensor



2 x  
5V 3 wires serial connection  
Typical use :  
RGB string LED dots,  
RGB strip LED up to 60 LEDs

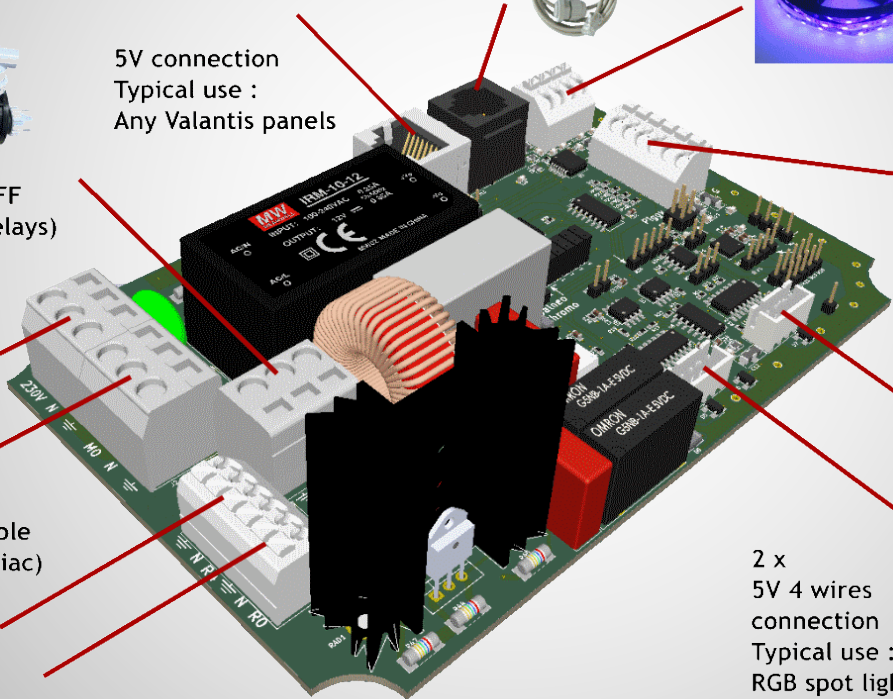


5V connection  
Typical use :  
Any Valantis panels

1 x  
230V 9A ON/OFF  
connection (Relays)  
Typical use :  
Pump



2 x  
5V 3 wires connection  
Typical use :  
Antivanal push buttons  
with LEDs



230V 16A 50Hz



1 x  
230V 6A variable  
connection (triac)  
Typical use :  
Blower

2 x  
5V 4 wires  
connection  
Typical use :  
RGB spot light 1W



2 x  
230V 4A ON/OFF  
connection (relays)  
Typical use :  
Solenoid valves



# PROFILED lighting concept

PROFILED ...

**... versatile solutions for beautiful light effects !**


VALANTIS has developed the controller **PROFILED** to allow users to connect simultaneously different types of lights, such as spots, bundles of LEDs or strips LEDs.

A perfect synchronisation of all connected light points is guaranteed.

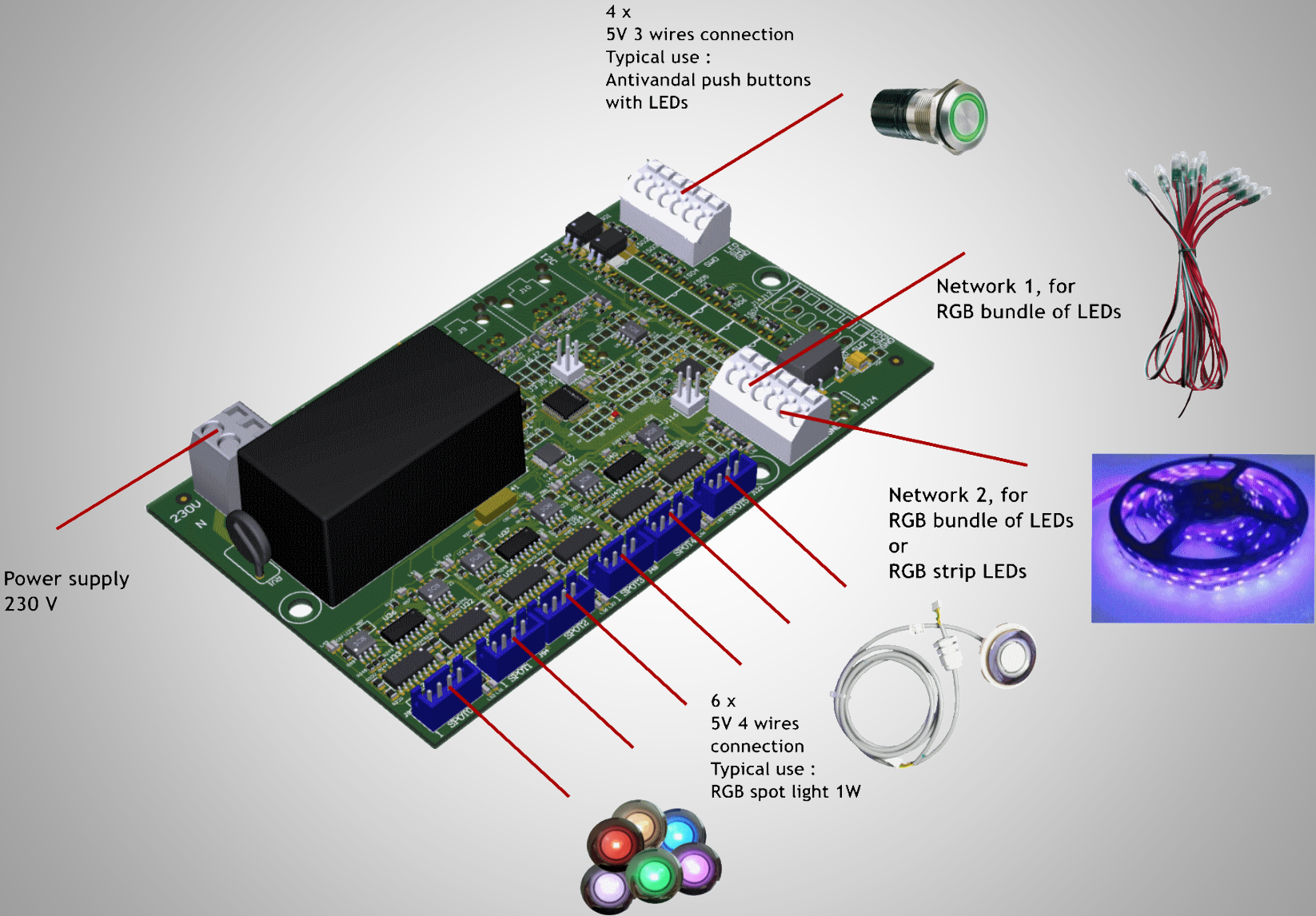
Safety low power LEDs are used to provide chromotherapy changing colour controlled by a simple button or by a smartphone.

Intallation is very easy to do and can be managed by professionnals or directly by end users.

The different components are waterproof, so PROFILED is an excellent solution for equipping bathtubs, showers, SPA, saunas, steam rooms and also can be installed on roofs, or walls in order to diffuse a special light ambiance.

Inno  ation for your wellness

# PROFILED lighting concept



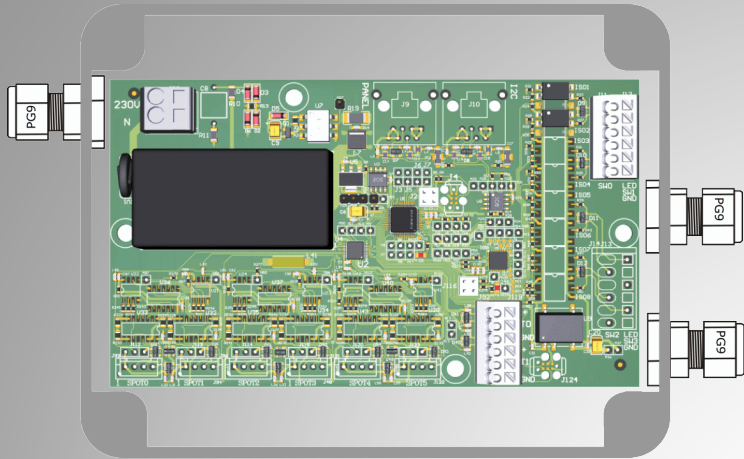
## FEATURES

ON/OFF Chromo RGB light

Automatic changing colour

Manual colour selection

Up to 60 RGB string or strip LEDs



Controller 100-240Vac 50Hz – 5V 4A  
Plastic enclosure 155x115x75 mm  
2 x outputs for string of strip LEDs  
up to 60 light points  
1 x output for push button  
Fit out with :  
- 3 x PG9 for cable diam. 4-8 mm  
IPX5 / ROHS



Code  
LA5026112



Code  
LA5226112



Code  
LA5126112



Code  
LA5326112



Code  
LA5526112

## Components (required)

Controller Profiled 060

Code VPF16059B1

Push button

Code : see above

## Options

\* Multiple choices  
See related pages

RGB LEDs string

Code VPF14053xx

\*

Plastic housing

Code BOBPLUxx

\*

RGB LEDs strip

Code xx

\*



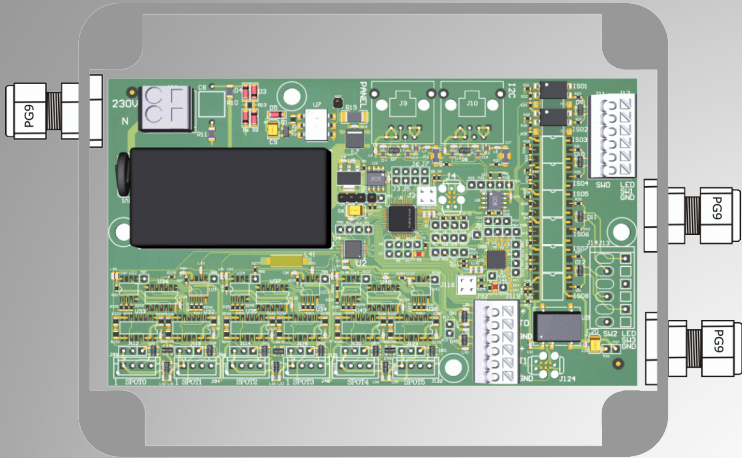
[Datasheet RGB Spot LED 060 22.08.16 03](#)





## FEATURES

- ON/OFF Chromo RGB light
- Automatic changing colour
- Manual colour selection
- Up to 144 RGB strip LEDs



Controller 100-240Vac 50Hz – 5V 4A  
Plastic enclosure 155x115x75 mm  
2 x outputs for strip LEDs  
up to 144 light points  
1 x output for push button  
Fit out with :  
- 3 x PG9 for cable diam. 4-8 mm  
IPX5 / ROHS



Code LA5026112    Code LA5226112    Code LA5126112    Code LA5326112    Code LA5526112

### Components (required)

Controller Profiled 060  
Code VPF16059B1  
Push button  
Code : see above

### Options

\* Multiple choices  
See related pages

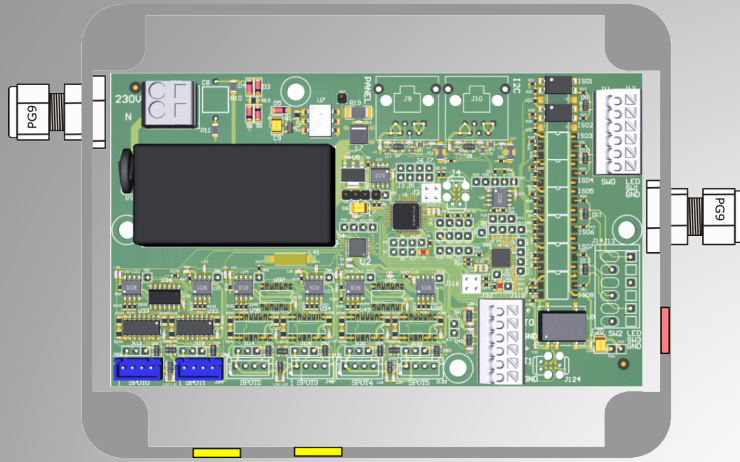
RGB LEDs strip    \*

Code xx



[Datasheet RGB Spot LED 144 22.02.19 01](#)





Controller 100-240Vac 50Hz – 5V 4A  
 Plastic enclosure 155x115x75 mm  
 2 x outputs for RGB spotlights  
 2 x outputs for string of strip LEDs  
 up to 60 light points  
 1 x output for push button  
 Fit out with :  
 - 2 x PG9 for cable diam. 4-8 mm  
 - 1 x grommet (shutters)  
 - 2 holes 16 mm  
 IPX5 / ROHS

## FEATURES

- ON/OFF Chromo RGB light
- Automatic changing colour
- Manual colour selection
- Up to 60 RGB string or strip LEDs
- 2 RGB Spot lights



## Components (required)

Controller Profiled 260  
 Code VPF16059C1  
 Push button  
 Code : see above

## Options

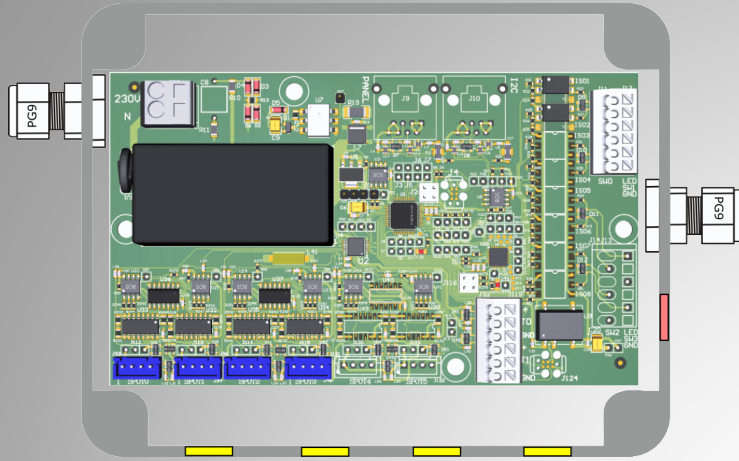
\* Multiple choices  
 See related pages

- Spot Chromo RGB 5V \*  
 Code VPF10031xx
- RGB LEDs string \*  
 Code VPF14053xx
- Plastic housing \*  
 Code BOBPLUxx
- RGB LEDs strip \*  
 Code xx



[Datasheet RGB Spot LED 260 22.08.16 03](#)





Controller 100-240Vac 50Hz – 5V 4A  
 Plastic enclosure 155x115x75 mm  
 4 x outputs for RGB spotlights  
 2 x outputs for string of strip LEDs  
 up to 60 light points  
 1 x output for push button  
 Fit out with :  
 - 2 x PG9 for cable diam. 4-8 mm  
 - 1 x grommet (shutters)  
 - 4 holes 16 mm  
 IPX5 / ROHS

## FEATURES

- ON/OFF Chromo RGB light
- Automatic changing colour
- Manual colour selection
- Up to 60 RGB string or strip LEDs
- 4 RGB Spot lights



Code LA5026112    Code LA5226112    Code LA5126112    Code LA5326112    Code LA5526112

## Components (required)

Controller Profiled 460  
 Code VPF16059D1  
 Push button  
 Code : see above

## Options

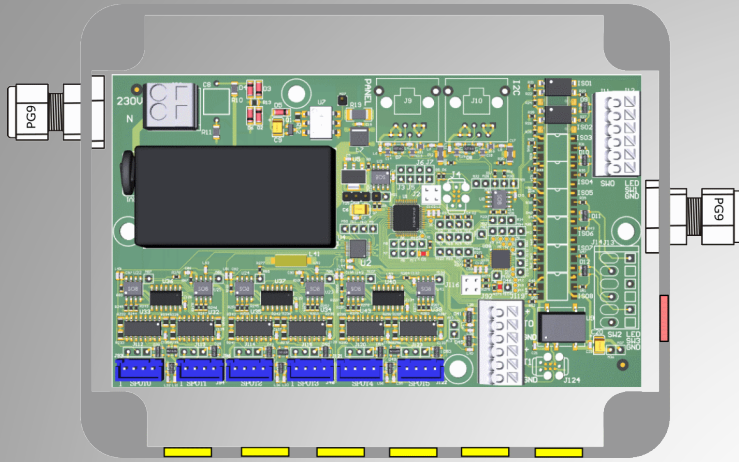
\* Multiple choices  
 See related pages

- Spot Chromo RGB 5V \*  
 Code VPF10031xx
- RGB LEDs string \*  
 Code VPF14053xx
- Plastic housing \*  
 Code BOBPLUxx
- RGB LEDs strip \*  
 Code xx



[Datasheet RGB Spot LED 460 22.08.16 03](#)





Controller 100-240Vac 50Hz – 5V 4A  
 Plastic enclosure 155x115x75 mm  
 6 x outputs for RGB spotlights  
 2 x outputs for string of strip LEDs  
 up to 60 light points  
 1 x output for push button  
 Fit out with :  
 - 2 x PG9 for cable diam. 4-8 mm  
 - 1 x grommet (shutters)  
 - 6 holes 16 mm  
 IPX5 / ROHS

## FEATURES

- ON/OFF Chromo RGB light
- Automatic changing colour
- Manual colour selection
- Up to 60 RGB string or strip LEDs
- 6 RGB Spot lights



Code LA5026112    Code LA5226112    Code LA5126112    Code LA5326112    Code LA5526112

## Components (required)

Controller Profiled 660L  
 Code VPF16059A1

Push button  
 Code : see above

## Options

\* Multiple choices  
 See related pages

Spot Chromo RGB 5V \*  
 Code VPF10031xx

RGB LEDs string \*  
 Code VPF14053xx

Plastic housing \*  
 Code BOBPLUxx

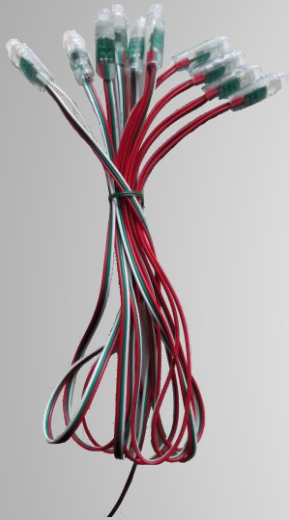
RGB LEDs strip \*  
 Code xx



[Datasheet RGB Spot LED 660L 22.08.16 03](#)



Bundle of RGB dots LED light.  
Ready for connection to any Valantis  
controllers with a 3 wires cable  
length of 1.5 m.  
IP65 / ROHS

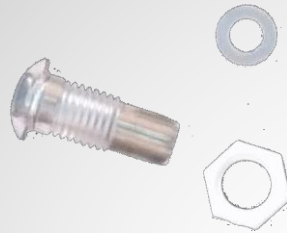


RGB 10 LEDs string 12-500-1500-3 IVD  
Distance between each LED 50 cm.  
Code VPF14053B1

RGB 10 LEDs string 12-1000-1500-3 IVD  
Distance between each LED 100 cm.  
Code VPF14053C2

Other configuration available on request

Plastic housing for single LED  
with gasket and lock-nut



Plastic housing 23 mm  
Milky. Gasket + nut  
Code BOBPLUA

Plastic housing 28 mm  
Clear. Gasket + nut + clip  
gasket, nut, clip  
Code BOBPLUC

5 V RGB spot light  
Chrome or white  
coated enclosure diam. 55 mm  
Thickness 1.2 mm  
Cable length 2000 mm. with  
PE M16 + nut  
IP65 / ROHS



Spot Chromo ABS chromed  
Code VPF10031A1

Spot Chromo ABS white  
Code VPF10031B1

Chromo-Strip  
Silicone glued  
With adhesive  
Different length, LEDs quantity & spacing



RGB 150 LEDs strip 5 m. 5V white in line  
Code VPF14053E1

RGB 150 LEDs strip 5 m. 5V black in line  
Code VPF14053E2

RGB 150 LEDs strip 5 m. 5V white  
Code LASTRING150SZ1

RGB 150 LEDs strip 5 m. 5V black  
Code LASTRING150SZ2

RGB 60 LEDs string 1 m. 5V white  
Code LASTRING60SZ1

RGB 60 LEDs string 1 m. 5V black  
Code LASTRING60SZ2

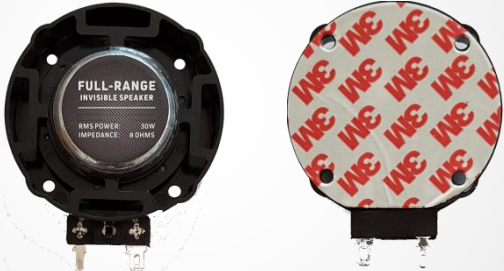
Bluetooth Amplifier  
100-240VAC 50/60Hz  
RMS Power : 30W  
Plastic enclosure 155x70x32 mm.

- Fit out with :
- 1 x Power supply cable length 1.4 m.
  - 2 x Loudspeaker cable length 15 cm. + connectors
  - 4 holes diam. 4 mm. for wall mounting
- IP56



Amplifier AUDIO BLUETOOTH AL  
Code VPF16060A1

2 x Loudspeaker diam. 75 mm.  
Thickness : 22 mm.  
RMS Power : 30W  
Impedance : 8 ohms  
4 holes diam. 4 mm. for wall mounting  
Double sided adhesive at rear



Loudspeaker 75AL  
Code VPF16060B1

2 x 2 wires and connectors  
Cable length : 2 m.



Loudspeaker wire AL  
Code VPF16060C1

